

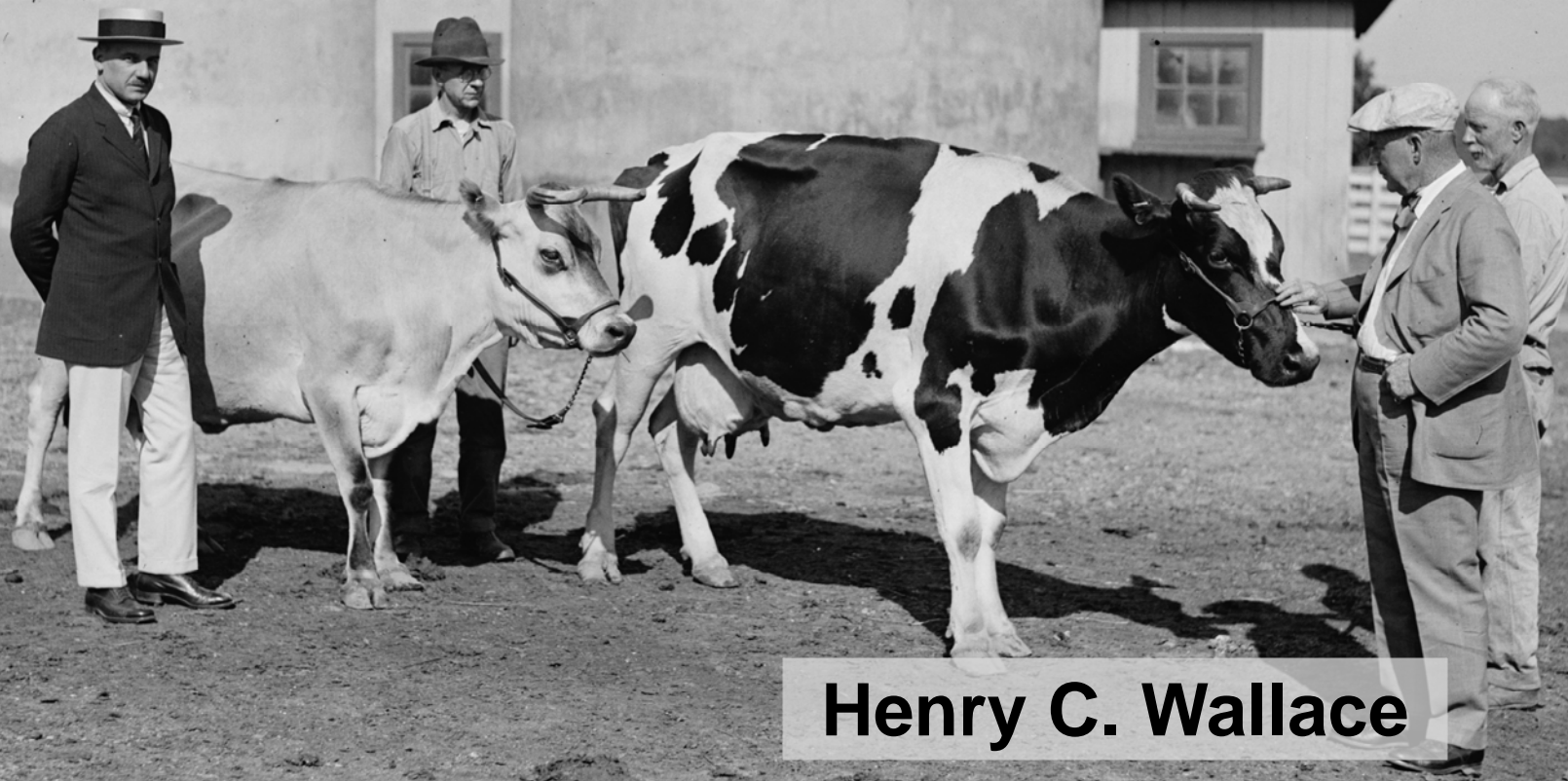
1924

Mary
Brandon

Sec Agriculture
Henry Cantwell Wallace



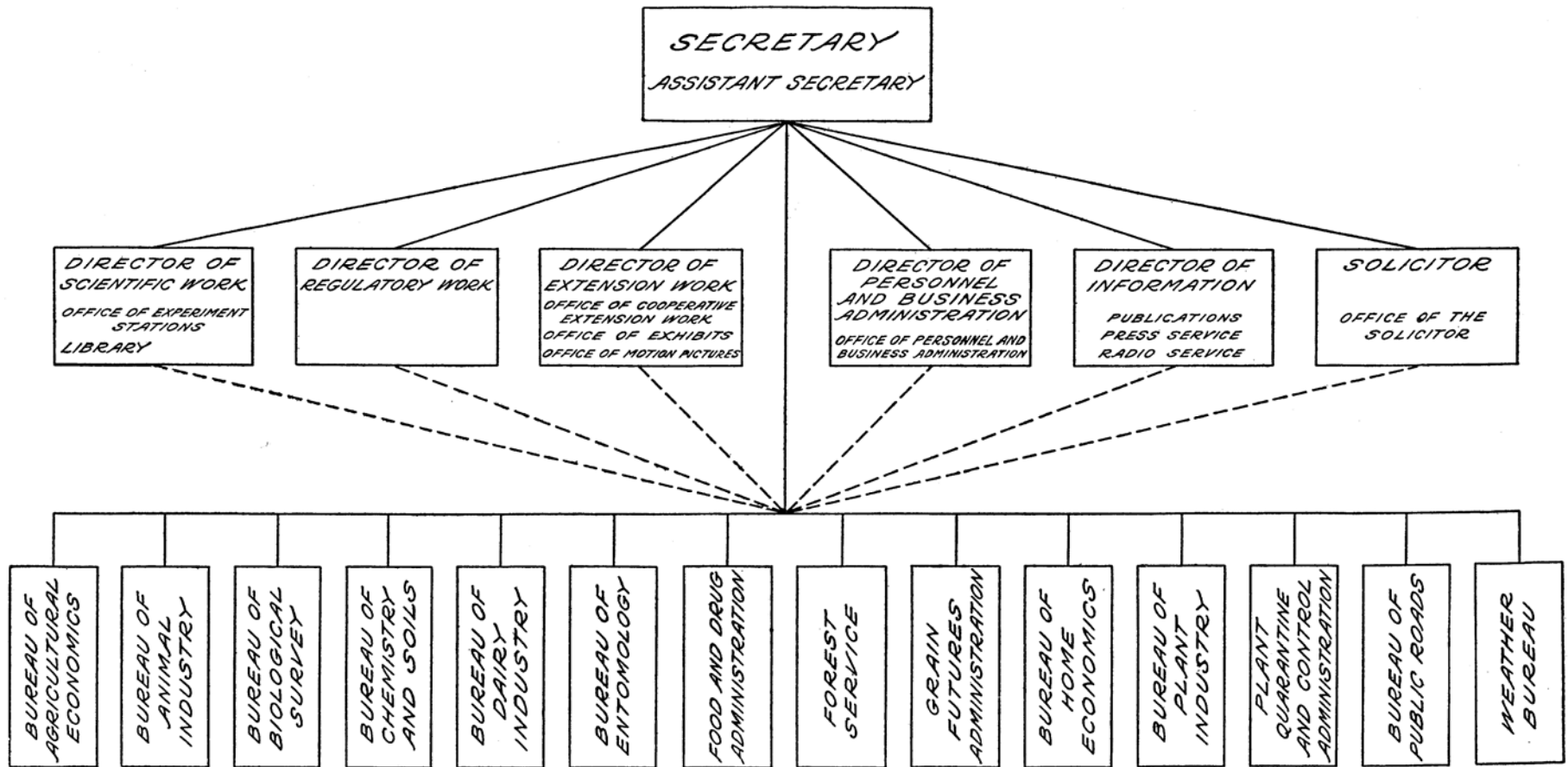
1924



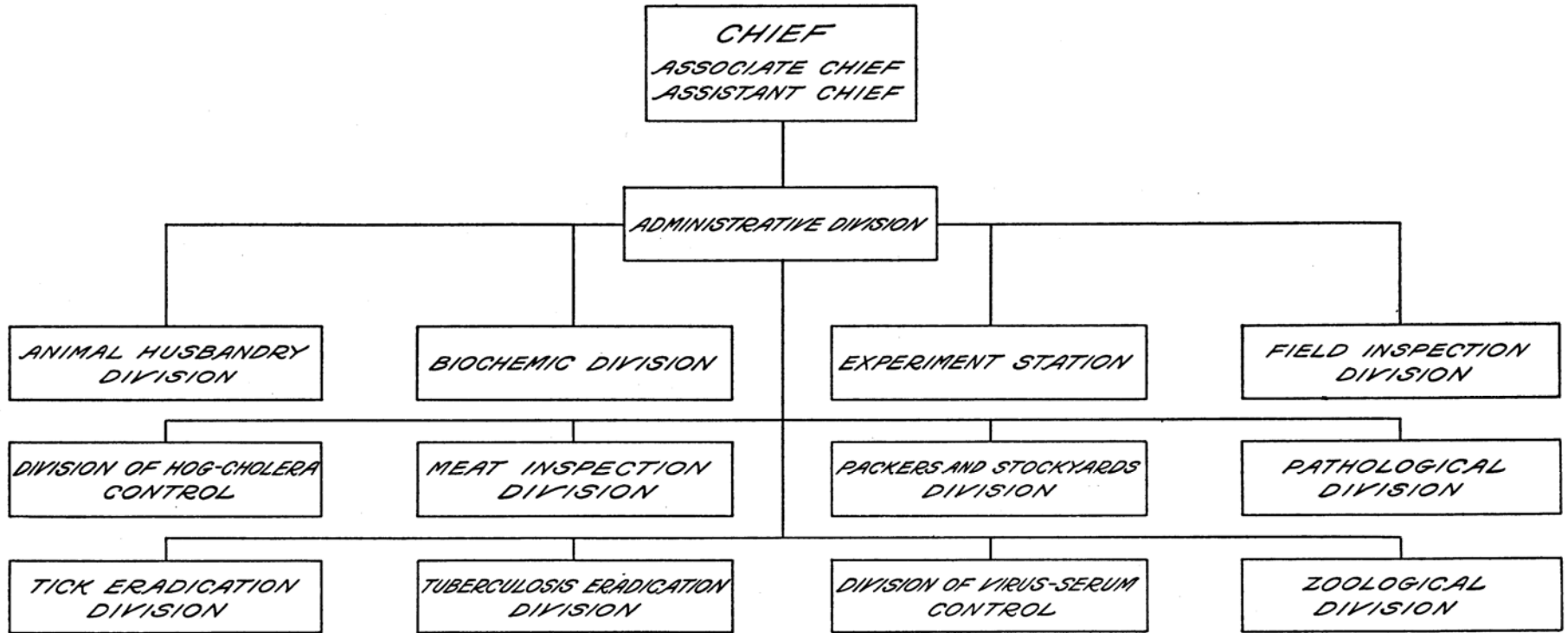
Henry C. Wallace

In 1930, most USDA employees directly involved in research

ORGANIZATION OF THE UNITED STATES DEPARTMENT OF AGRICULTURE



BUREAU OF ANIMAL INDUSTRY



FIELD SERVICE
APPROXIMATELY 4,000 FIELD EMPLOYEES; 800 MEAT INSPECTION ESTABLISHMENTS IN 250 CITIES; 80 PUBLIC STOCKYARDS SUPERVISED; INSPECTORS AT 38 PORTS OF ENTRY, AND IN ALL THE STATES; EXPERIMENTAL FARMS AND RESEARCH LABORATORIES AT 20 POINTS



Depression

**USDA expands
& creates new
support programs**

1933 Agricultural Adjustment Act

**1935 Soil Conservation Service
Federal Surplus Commodities Corp.**

1937 Farm Security Adm.

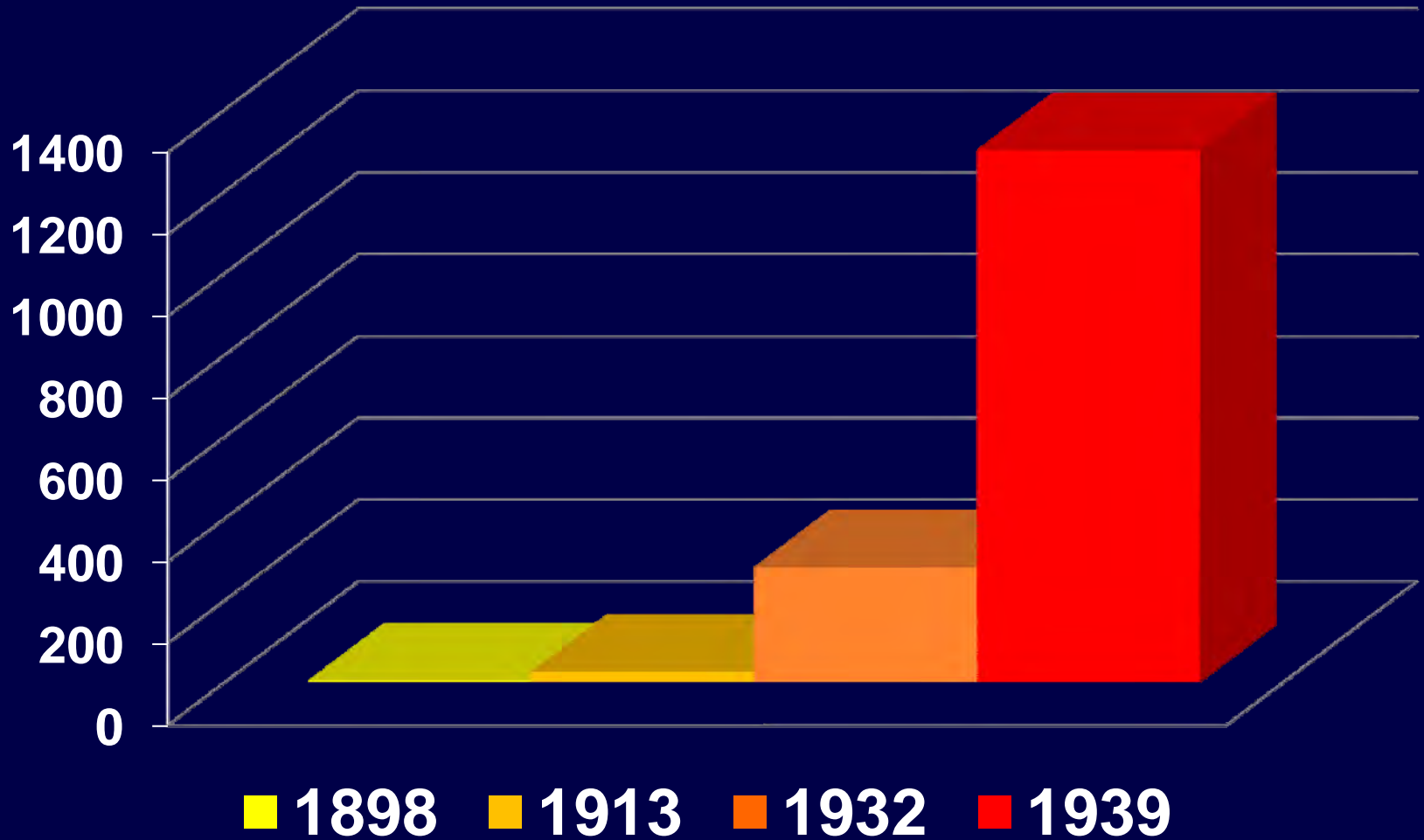
**1938 Federal Crop Insurance Corp.
Agricultural Adjustment Act**

**1939 Rural Electrification Adm.
Farm Credit Adm.
Commodity Credit Corp.**

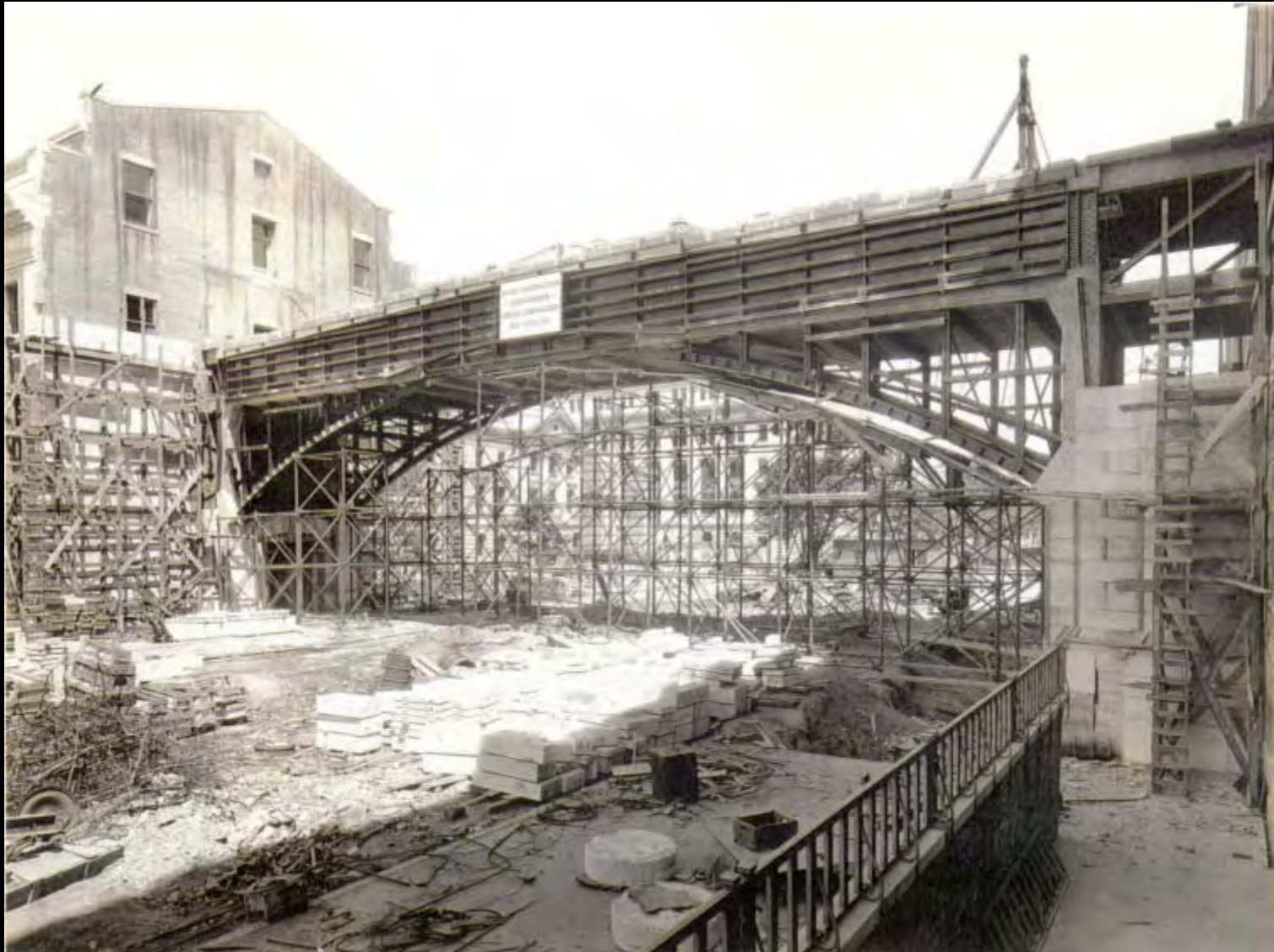
USDA support programs:

- ✓ larger budget
- ✓ more employees
- ✓ more space

USDA Appropriations (\$M)



In **1936**, construction of the “South” Building for office space begins.



When completed in **1945**, South Building is largest office Building in US.



**Representative
John M. Jones**



**Senator
John H. Bankhead**



1935

**Congress passes
Bankhead-Jones Act
that adds
\$20 million to
research budget**

40% basic research
60% distributed to rural communities
based upon population size

1938

Agricultural Adjustment Act (P.L. 75-430)

The Secretary is hereby authorized and directed to establish, equip, and maintain four regional research laboratories, one in each major farm producing area, and at such laboratories to conduct researches into and to develop new scientific chemical and technical uses and new and extended markets and outlets for farm commodities and products and byproducts thereof.

Four regional research laboratories located in:

- ✓ Peoria, IL
- ✓ Albany, CA
- ✓ Wyndmoor, PA
- ✓ New Orleans, LA